

LIVERNE

TRUCK EQUIPMENT

Baja Steps	1	Nerf Bars	8
Back Splash	9	O-MegaSteps	4
6" Stainless Steel Ovals	7	Oval Nerf Bars	8
Bed Rails - Aluminum Oval & Stainless Steel	24	ProTec Grille Guards	21
Bull Bars	22-23	Prowler Max Grille Guards	19-20
Bumper Inserts	14	Ram Air Hoods	29
Bumpers	27	Receiver Hitch Steps	9
Cab Guard	24	Regal 7 Oval Steps	2
Displays	30	Side Entry Steps	5
EcoBoost Inserts	14	Splash Guards & Mud Guards	25
EZ Step	10	StepUp Box Step	10
Grille Guards	15-18	Stor-Away	14
Grip Steps	6	Tonneau Cover	26
Hauler Racks	28	Tuff Guards	21
MegaSteps	3	Van Steps & Accessories	11-13



QUALITY TRUCK & SUV ACCESSORIES



Made in America by American Workers

BajaStep®

- Features a 3" Stainless Steel Accent Tube with 10 ga. Stainless Steel Step Plates
- Available in Cab Length and Wheel-to-Wheel Applications for Chevrolet/GMC, Ford, Dodge, Toyota and Jeep Models
- Entire Stainless Steel, No-Rust Assembly is Available in Polished or Powder Coated Black Finish
- Includes Vehicle-Specific, High Strength Steel Mounting Brackets
- Features Easy, No-Drill Installation
- The Unique, 3½" x 12" Slip-Resistant Steps Feature Protruded Circular Treads
- The Step Area is Over 4" Below the Top of the 3" Accent Tube
- Step Design Allows for Easy Debris Removal with 1/2" Holes



Lasts A Lifetime

Cab Length - Black



Wheel-to-Wheel - Black



Cab Length - Polished

**POLISHED & BLACK STAINLESS STEEL
BAJA STEPS**

Regal 7

Oval Step U.S. PATENT NO. 6,448,569

The Largest Oval Step on the Market!

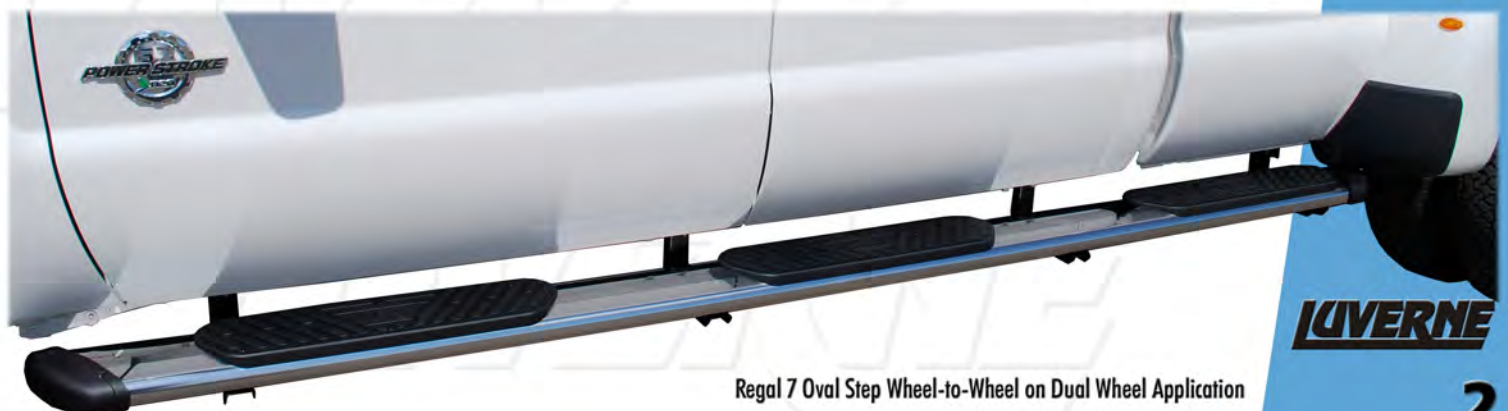
- Stainless Steel 7" Oval Step with Contoured, Factory-Installed Plastic End Caps in High-Polish Finish or 78" and 88" in Black Powder Coat Finish
- Superb Styling with Matching Angled Step Pads & End Caps
- Features a 7 Inch Wide Step with Factory-Installed, Rugged Non-Skid Polypropylene Step Pads for Safe and Secure Entry & Exit from Your Vehicle
- Oversize Step Pads are Securely Bolted Into Place
- Universal Board Lengths Fit a Wide Range of Cab Length & Wheel-to-Wheel Applications (Step Boards and Brackets Packaged Separately)
- Vehicle-Specific Brackets and Stainless Steel Fasteners Allow for Easy, No-Drill Installation on Most Models (Sold Separately)
- Available for Chevrolet/GMC, Ford, Dodge, and Toyota Pickup Models



Lasts A Lifetime



Regal 7 Oval Step Crew Cab Application



Regal 7 Oval Step Wheel-to-Wheel on Dual Wheel Application

LUVERNE

STAINLESS STEEL
REGAL 7 OVAL STEP

MegaStep®

**The Look & Style of a Nerf Bar
Combined with the Convenience
of an Extra Wide Step Area**

- High-Polish 18 ga. Stainless Steel with Full-Length, Non-Slip Rubber Step
- Extruded Aluminum Core for Superior Strength
- Features a 6½ inch x 3 inch Step with a Full 5 inches of Rubber Step Width
- Step Position on Brackets can be Adjusted In or Out and Forward or Backward to Suit Personal Preference
- Vehicle-Specific Brackets and Pre-Installed Fasteners Allow for Easy Installation
- Universal Board Lengths to Fit a Wide Range of Cab Length and Wheel-to-Wheel Applications for Chevrolet/GMC, Ford, Dodge, and Toyota Pickup, SUV, and Van Models
- Brackets are Black Powder Coated, High-Strength Steel
- Brackets and Step Boards are Sold Separately



Wheel-to-Wheel MegaStep Application



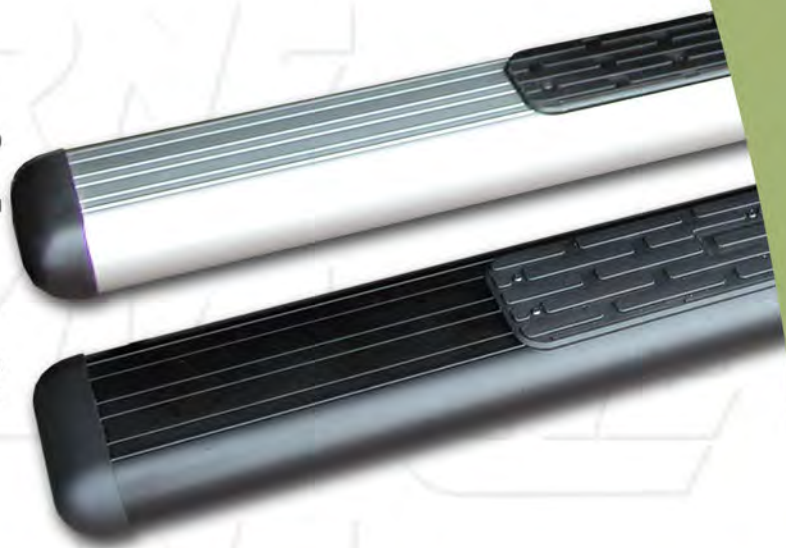
*Lasts A
Lifetime*



Cab Length MegaStep Application

O-MegaStep

- Features a 6 inch x 2¾ inch Anodized T-6 Aluminum "Oval" Step Available in Several Lengths
- Assorted Lengths are Available in Satin or Black Anodized Finish
- Vehicle-Specific Brackets Allow for Easy, No-Drill Installation
- Universal Board Lengths Fit a Wide Range of Cab Length and Wheel-to-Wheel Applications for Chevrolet/GMC, Ford, Dodge, and Toyota Pickup, SUV, and Van Models
- Large Step Pads are Constructed of a "No-Break" Polypropylene and can be Positioned and Attached to Suit Customer Preference
- Brackets are Black Powder Coated High-Strength Steel
- End Caps are Made of Paintable TPO Plastic
- Brackets and Step Boards are Sold Separately



O-MegaStep Satin SUV



O-MegaStep Satin Cab Length



O-MegaStep Satin Wheel-to-Wheel

CAB LENGTH & WHEEL-TO-WHEEL
O-MEGASTEPS

LIVERNE

Stainless Steel Side Entry Steps & Box Extensions

- Stainless Steel 7 inch Step with Contoured Plastic End Caps
- Available in High-Polished or Black Powder Coat Finish for Long-Lasting Corrosion Resistance
- Available in Custom Sizes to Fit a Wide Range of Applications for Chevrolet/GMC, Ford, Dodge, and Toyota Pickups & SUVs
- Lifetime Warranty on Stainless Steel Finish
- Easy, No-Drill Installation on Most Models
- Brackets are Pre-Installed at Factory on Most Models
- Box Extensions for Short Box, Long Box, and Dual Wheel Models



Wide Step Pads Provide a Bold Appearance and Expanded Step Area



Lasts A Lifetime



Ford F-350 Dual Wheel Box Extension

STAINLESS STEEL
SIDE ENTRY STEPS

GripStep®

- Features a 7 inch x 2½ inch Step Constructed of 5052-H32 Aluminum
- Durable Black Powder Coat Finish
- Features an Innovative Step Design for Added Traction and Safety
- Vehicle-Specific Brackets Allow for Easy Installation
- Universal Board Lengths to Fit Cab Length and Wheel-to-Wheel Applications for Chevrolet/GMC, Ford, Dodge, and Toyota Pickups, SUVs, and Vans
- Brackets are Black Powder Coated High-Strength Steel
- Brackets and Step Boards are Sold Separately
- Includes Stainless Steel Fasteners and Textured Black Plastic End Caps
- Some Step Board Assembly Required



CAB LENGTH & WHEEL-TO-WHEEL
GRIP STEPS



Cab Length

**With the Luerne Grip Step,
Safe Traction is Assured
in Any Weather**



Grip Step Back Splash Option

Black Aluminum Back Splash
is Available in 75" or 85" Lengths
(Packaged as a Pair)

Wheel-to-Wheel

LUERNE

6" Stainless Steel Oval

- High-Polish Stainless Steel 6" x 3" Oval Tubular Step
- Step Board is Completely Enclosed
- Features 30 Degree Bends on Both Ends
- Non-Skid Plastic Step Pads are 24" Long and 6" Wide
- Rounded Polished End Caps are Welded into Place
- Easy, No-Drill Installation on Most Models Using High-Strength Steel Cradle-Mount Brackets
- Lifetime Warranty on Stainless Steel Finish
- Currently Available in Cab Length Applications



Brackets are Attached to the Tube with Two Hex Bolts



Lasts A Lifetime



2014 Ram 1500 Quad Cab

Nerf Bars

- Custom-Designed for Chevrolet/GMC, Ford, Dodge, Toyota, and Nissan Pickups and SUVs
- Easy, No-Drill Installation on Most Models
- Heavy-Duty 3" Tube with Mandrel Bends
- Available in High-Polish Stainless Steel (Lifetime Warranty on Finish); and Durable Black Powder Coat Finish on Stainless Steel Tube
- Factory Installed Safety Step Pads Provide a Large Step Area to Assist in Vehicle Entry & Exit
- Brackets are Factory Installed



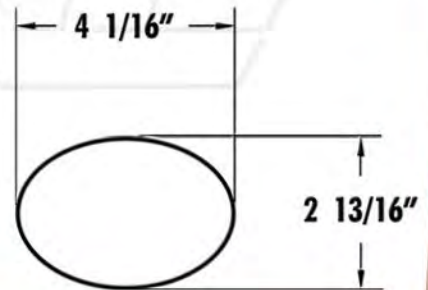
*Lasts A
Lifetime*



3" Wheel-to-Wheel

4" Oval Nerf Bars

- Custom-Designed for Chevrolet/GMC, Ford, Dodge and Toyota Pickups in Cab and Wheel-to-Wheel Lengths
- Easy, No-Drill Installation
- Heavy-Duty 4" Stainless Steel Tube with Mandrel Bends (Lifetime Warranty on Finish)
- Longer, Wider Safety Step Pads are Factory Installed
- Brackets are Factory Installed



4" Oval Cab Length

60° Series Nerf Bars

- Contemporary, Cradle-Mounted 3" Tubes with 60 Degree Mandrel Bends
- Available in High Polish Stainless Steel (Lifetime Warranty on Finish); and Durable Black Powder Coat Finish
- Factory-Installed Safety Step Pads Provide a Large Step Area
- Easy, No-Drill Installation
- Available for Toyota Tundra, Buick Enclave and Chevrolet Traverse



MegaStep Receiver Hitch Step

- 26" High Polish 18 ga. Stainless Steel with Full-Length, Non-Slip 5 inch Rubber Step
- Extruded Aluminum Core



O-MegaStep Receiver Hitch Step

- 6 inch x 2 3/4 inch Anodized T-6 Aluminum "Oval" Step Available with a Satin or Black Anodized Finish
- 26" in Length
- End Caps are Made of Paintable TPO Plastic



Grip Step Receiver Hitch Step

- 7 inch Step Constructed of 5052-H32 Aluminum with a Durable Black Powder Coat Finish
- 26" Step Features an Innovative Design for Added Traction
- Textured ABS Plastic End Caps



Receiver Hitch Stingers



- 2" Square Receiver Stingers Available for Specific MegaStep, O-MegaStep and Grip Step Hitch Step Applications



- 2" Square Receiver Stinger with 6" Drop for the Grip Step Hitch Step Application

Back Splash MegaStep / O-MegaStep

- 88" GM, Ford, and Dodge Back Splash Constructed of Textured ABS Plastic (Packaged as a Pair)
- Fits all MegaSteps & O-MegaSteps (Excludes W2W and Van Applications)



MegaStep Back Splash



O-MegaStep Back Splash

SPRINTER / NISSAN NV

ACCESSORIES



Satin & Black O-MegaSteps Shown



MegaSteps Shown



SIDE STEPS

Sprinter and Nissan NV Grip Step, MegaStep and O-MegaStep Applications Feature 36" and 98" Step Boards Available in Combinations of Short/Short, Short/Long, or Long/Long for Your Specific Requirements, Easily Installed with Vehicle-Specific Mounting Brackets.



BullBar

Luverne's 3" Tubular or 4" Oval Bull Bar is Available for the Sprinter in High-Polish Stainless Steel or Black Powdercoat Finish. Easy to Mix & Match with Optional Polished or Black Skid Plate. Includes Light Mounting Holes and License Plate Bracket. Lifetime Warranty on Stainless Steel Finish.



REAR STEPS

For Easy Entry and Exit at the Rear of the Sprinter or Nissan NV. Luverne has Available an O-MegaStep in Satin or Black, the Grip Step and MegaStep in 54" Lengths. Installs Easily with Specifically-Designed Mounting Brackets.



O-MegaStep Shown

TUFF GUARD

Front-End Protection for the Sprinter Van Models, the Tuff Guard Features Heavy-Duty 3", 14 ga. 409 Stainless Steel Powder Coated Black, Tubular Construction. Mounting Brackets Sold Separately.

RAM PROMASTER ACCESSORIES

TUFF GUARD, GRIP STEPS, MEGASTEPS & O-MEGASTEPS
RAM PROMASTER



Grip Steps Shown



SIDE STEPS

The Ram ProMaster Grip Step, MegaStep and O-MegaStep Applications Feature 36" and 98" Step Boards Available in Combinations of Short/Short, Short/Long, or Long/Long for Your Specific Requirements, Easily Installed with Vehicle-Specific Mounting Brackets.



Satin O-MegaSteps Shown



Grip Step Shown

REAR STEPS

For Easy Entry and Exit at the Rear of the Ram ProMaster. Luerne has Available an O-MegaStep in Satin or Black, the Grip Step and MegaStep in 54" Lengths. Installs Easily with Specifically-Designed Mounting Brackets.

TUFF GUARD

Front-End Protection for the Ram ProMaster, the Tuff Guard Features Heavy-Duty 3", 14 ga. 409 Stainless Steel Powder Coated Black, Tubular Construction. Mounting Brackets Sold Separately.



LIVERNE

FORD TRANSIT ACCESSORIES



Grip Steps Shown



SIDE STEPS

The Ford Transit Grip Step, MegaStep and O-MegaStep Applications Feature 36" and 98" Step Boards Available in Combinations of Short/Short, Short/Long, or Long/Long for Your Specific Requirements, Easily Installed with Vehicle-Specific Mounting Brackets.



MegaStep Shown



Satin O-MegaStep Shown



TUFF GUARD

Front-End Protection for the Ford Transit Van, the Tuff Guard Features Heavy-Duty 3", 14 ga. 409 Stainless Steel Powder Coated Black, Tubular Construction. Mounting Brackets Sold Separately.

REAR STEPS

For Easy Entry and Exit at the Rear of the Ford Transit. Luverne has Available an O-MegaStep in Satin or Black, the Grip Step and MegaStep in 54" Lengths. Installs Easily with Specifically-Designed Mounting Brackets.



Grip Step Shown

TUFF GUARD, GRIP STEPS, MEGASTEPS, & O-MEGASTEPS
FORD TRANSIT

Stor-Away

- Underseat Storage with Split-Top Compartment - Easily Bolts Into Place
- Available for the 2009-2015 Ford F-150, the 2014-2015 Chevrolet Silverado/GMC Sierra 1500 and the 2015 Chevrolet Silverado/GMC Sierra HD Models



EcoBoost Insert

- For Installation on the Ford F-150 EcoBoost
- Available in Three Unique Finishes
- Easily Bolts Into Place for Effective Protection
- Maximum Protection with Minimal Air Restriction



Black Finish



Chrome Finish



Stainless Steel Finish

GM Bumper Insert

- For Installation on the 2015 Chevrolet Silverado 2500HD/3500
- Stainless Steel
- Easily Bolts Into Place for Maximum Engine Compartment Protection



MISCELLANEOUS ACCESSORIES
STOR-AWAY / BUMPER INSERTS

LUVERNE

Chevrolet/GMC 2" Tubular Grille Guard

- Available in Chrome or Textured Black for 2007-2015 Chevrolet/GMC Pickup & SUV Models
- 2" One-Piece Tubular Ring Assembly
- Frame-Mounted Uprights
- Rubber Extrusions are Securely Bolted to Uprights for Added Protection
- Factory Tow Hooks Replaced by Built-In Tow Hooks in Mounting Brackets
- Easy, No-Drill Installation
- Upright Package and One-Piece Ring Assembly Required for Complete Grille Guard



2015 GMC Sierra 2500/3500
2" Tubular Grille Guard



2014-2015 Chevrolet Silverado 1500
2" Tubular Grille Guard



2007-2013 Chevrolet Silverado 1500
2" Tubular Grille Guard



2007-2014 GMC Sierra 2500/3500
2" Tubular Grille Guard

Chevrolet/GMC 2" Tubular Grille Guard

2007-2014 Chevrolet Suburban/
GMC Yukon/Chevrolet Avalanche
2" Tubular Grille Guard

Also Available for the
15-16 Chevrolet Suburban/GMC Yukon

Note: Chevrolet Tahoe/Suburban
Requires Minor Front-End Modification



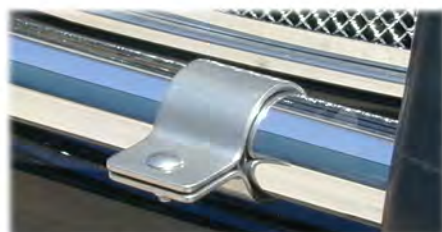
All Current Model 2" Grille Guard Uprights
Feature a Polished Stainless Steel
Back Cover Plate to Ensure a Finished
Look to the Back of the Uprights
(Shown in Photo)

Luverne Grille Guards Give You
Great Styling with the Right Protection

Chevrolet/GMC 1 1/4" Tubular Grille Guard

- Available in Chrome or Textured Black for 2007-2014 Chevrolet/GMC Models
- 1 1/4" One-Piece Tubular Ring Assembly
- Frame-Mounted Uprights
- Rubber Extrusions and Trim-Top Caps are Securely Bolted to Uprights
- Easy, No-Drill Installation
- Excludes "SS" Models on Classic Body Style

2007-2013 Chevrolet Silverado 1500
1 1/4" Tubular Grille Guard



Light Bracket Kit

- Light Bracket Kit for 2" Grille Guards



Ford Super Duty 2" Tubular Grille Guard

- Available in Chrome for the 2005-2007, and in Chrome or Textured Black for the 2008-2010 and 2011-2015 Ford Super Duty Models
- 2" One-Piece Tubular Ring Assembly
- Frame-Mounted Uprights
- Rubber Extrusions are Securely Bolted to Uprights for Added Protection
- Easy, No-Drill Installation



2011-2015 Ford Super Duty
2" Chrome Tubular Grille Guard



2008-2010 Ford Super Duty
2" Chrome Tubular Grille Guard



2005-2007 Ford Super Duty
2" Chrome Tubular Grille Guard



Ford F-150 2" Tubular Grille Guard

- Available in Chrome or Textured Black for the 2009-2015 Ford F-150
- 2" One-Piece Tubular Ring Assembly
- Frame-Mounted Uprights
- Rubber Extrusions are Securely Bolted to Uprights for Added Protection
- Easy, No-Drill Installation
- Air Dam Modification Required on 2wd Models
- F-150 EcoBoost Requires Kit #391120

Dodge Ram 2" Tubular Grille Guards

- Available in Chrome or Textured Black for the 2006-2008 and 2009-2015 Ram 1500
- 2" One-Piece Tubular Ring Assembly
- Frame-Mounted Uprights
- Rubber Extrusions are Securely Bolted to Uprights
- Easy Installation; Minor Drilling Through Plastic may be Required
- Tow Hook Removal Required

NOTE: Does Not Work with Tradesman, Express or Sport Models

2009-2015 Dodge Ram 1500



- Available in Chrome or Textured Black for the 2006-2009 and 2010-2015 Ram HD Models (Including the Chassis Cab Models)
- 2" One-Piece Tubular Ring Assembly
- Frame-Mounted Uprights
- Rubber Extrusions are Securely Bolted to Uprights for Added Protection
- Easy, No-Drill Installation

2010-2015 Dodge Ram 2500, 3500



Toyota Tundra 2" Tubular Grille Guard

- Available in Chrome or Textured Black for the 2014-2015 Toyota Tundra and the 2007-2009 Toyota Tundra in Chrome
- 2" One-Piece Tubular Ring Assembly
- Frame-Mounted Uprights
- Rubber Extrusions are Securely Bolted to Uprights for Added Protection
- Easy, No-Drill Installation

2014-2015 Toyota Tundra



NOTE: Will Fit the 2010-2013 Toyota Tundra with Minor Trimming of Plastic

Prowler Max GRILLE GUARD

- Solid One-Piece, Heavy-Duty Construction for the Ultimate Protection Against Road Hazards
 - Features a Wraparound Ring Design Constructed from 2" Diameter Tube with 3/8" Diameter Headlight Wires for Maximum Headlight Protection
 - 2009+ Ram 1500 Features Additional Wires for Bumper Protection
 - Uprights are Constructed from 1/4" Thick Steel and Feature Rubber Facing
 - Heavy Gauge Steel "Punched" Screen Provides Extra Protection for the Grille
 - Built-In Diamond Tread Bottom Step for Easy Access to the Hood and Engine on High Profile HDs
 - Unmistakable Luverne Styling with the Logo Reveal in the Center
 - Durable, E-Coat and Black Powder Coat Finish or High-Polish Stainless Steel for Long-Lasting Protection Against Corrosion
 - Easy, No-Drill Frame-Mounted Installation
- Note: Select Models Available in Polished Stainless Steel



Dodge Ram 1500 (Shown) & HD Models
(Excludes Ram 1500 Tradesman, Express and Sport Models)



Chevrolet Silverado/GMC Sierra
1500 and 2500/3500 Models

**Maximum Protection from
a Heavy-Duty Grille Guard!**



Ford F-150 Models



Ford Super Duty Models

**E-COAT & BLACK POWDER COAT
PROWLER MAX GRILLE GUARD**



Chevrolet Silverado/GMC Sierra
1500 and 2500/3500 Models



Ram 2500, 3500, 4500, 5500



Ford F-250/F-350

BullBar

It's Easy to Mix and Match
Finishes on Bull Bars
and Skid Plates!

- Universal Assembly Available in 3" Diameter Tubular or 4" Oval Construction and Vehicle-Specific Mounting Brackets for Chevrolet/GMC, Ford, Dodge, Jeep and Toyota are Packaged Separately
- High-Polish Stainless Steel or E-Coat and Black Powder Coat Finish
- Universal Stainless Steel Laser Cut Skid Plate in Black Powder Coat or High-Polish Finish
- Includes Light Mounting Holes and License Plate Bracket
- Black Powder Coated 1/4" Steel Brackets Ensure Maximum Strength
- Bull Bar Assemblies and Skid Plates Sold Separately
- Easy, No-Drill Installation



4" Oval



3" Round



4" Oval Chevrolet Silverado 2500



GMC Sierra 2500HD/3500



Ford Super Duty



4" Oval Ford F-150



Bull Bar Assembly can be Installed
With or Without the Skid Plate



Ford Explorer

**STAINLESS STEEL & BLACK
BULL BARS**



*Lasts A
Lifetime*



Dodge Ram 1500



Dodge Durango



4" Oval Ram HD



Grand Cherokee



Toyota Tacoma



Toyota Tundra



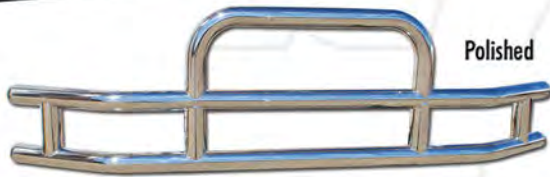
*Lasts A
Lifetime*

TUFFGuard

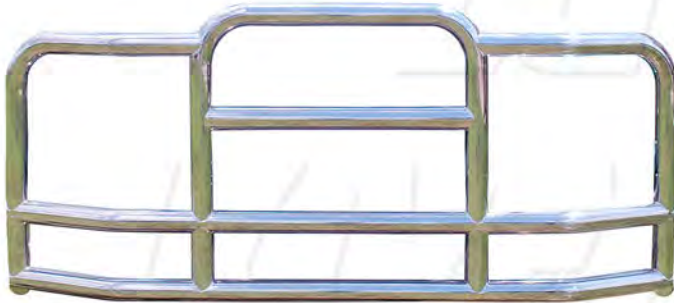
- Heavy-Duty 3" Tubular Construction
- Available in 14 ga. High Polish Stainless Steel or 14 ga. Powder Coated Black 409 Stainless Steel with a 15° or 25° Bend for Specific Applications
- Universal Fit with Vehicle-Specific Mounting Brackets
- Easy Installation - No Drilling or Front-End Modification
- Mounting Brackets Sold Separately
- Provides Strong and Stylish Bumper Protection
- Folds Down for Easy Access to Hood



Black



Polished



The Tuff Guard and ProTec are Available for a Wide Range of Models from Freightliner, International, Peterbilt, Kenworth, GM, Ford, Mack and Volvo



Lasts A Lifetime

PROTEC

Grille Guard

- Heavy-Duty 3" Tubular Construction
- Available in 14 ga. High Polish Stainless Steel or 14 ga. Powder Coated Black, E-Coated Steel with a 15° or 25° Bend for Specific Applications
- Universal Fit with Vehicle-Specific Mounting Brackets
- Easy Installation - No Drilling or Front-End Modification
- Mounting Brackets Sold Separately
- Provides Strong and Stylish Bumper, Lights and Grille Protection
- Folds Down for Easy Access to Hood



Cab Guard

- Universal Fit on Full-Size, Current Model Pickups
- Heavy-Duty Flat Bar Steel Construction with Black Powder Coat Finish
- Easy Installation with Minor Drilling Required
- Utilizes Front Stake Pocket Opening for Bracket Mount
- Capability of Mounting Aftermarket Light on Optional Top Bar of Cab Guard (Sold Separately) Ratchet-Enabled Movement
- Utility Light Brackets with Ratchet-Enabled Movement Available as Accessories



Top Light Bar and Utility Light Brackets Sold Separately

(Shown with Aftermarket Lights)



Aluminum Oval Bed Rails

- Aluminum Extrusion Construction with Black Plastic End Caps and Die Cast Aluminum Bases
- Uniquely-Styled Elliptical Design for Added Strength and Attractive Styling
- Available in a Chrome-Plated or Black Anodized Finish
- Fits All GM/Ford/Dodge Pickups with Stake Pockets from 2002-Current
- Available in Three Lengths to Fit a Wide Range of Pickup Box Lengths: 70" for 5 ft. to 5.8 ft. Box, 80" for 6 ft. to 6.6 ft. Box, and 100" for 8 ft. Box
- The Tie Downs and the Black Aluminum Bases are Secured in a Full-Length Slot that Allows for Complete Horizontal Adjustment
- Securely Mounts Into Existing Stake Pockets Without Drilling (Trucks with Bed Caps Installed may Require some Cutting)
- Bed Rails Work with Most Tonneau Covers and Bed Liners



Stainless Steel Tubular Bed Rails

- High Polish Stainless Steel
- 1-7/8" Stainless Steel Tube with Mandrel Bends
- Bed Rails Mount Securely to Stake Pockets
- Bed Rails Work with Most Tonneau Covers and Bed Liners



HEAVY-DUTY
CAB GUARD

CHROME, BLACK & STAINLESS STEEL
BED RAILS

LIVERNE

Contoured, Stainless Steel Splash Guards

- Custom-Fit Applications Available for Chevrolet/GMC, Ford and Dodge Pickups; and Universal Fit for Virtually All Other Applications (Drilling Required)
- Front or Rear Splash Guards in 12" x 20" or 12" x 23" Sizes
- 20" x 23" Dual Wheel Applications
- Injection Molded, Co-Polymer Polypropylene with Stainless Steel Insert
- UV Stabilized; Resists Fading in the Sun
- Easy to Install (Includes Corrosion-Resistant Mounting Hardware)
- Improves Vehicle Appearance & Extends Body Life by Reducing Rock and Stone Chips

Add the "Flash" of Stainless Steel to Your Vehicle with Ease...



Lasts A Lifetime



Textured Rubber Mud Guards

- Custom-Fit Applications Available for Chevrolet/GMC, Ford and Dodge Pickups; and Universal Fit for Virtually All Other Applications (Drilling Required)
- Heavy-Duty 3/8" Textured Rubber
- Front or Rear Mud Guards in 12" x 20", 12" x 23", and 20" x 23" Dual Wheel Sizes
- 18 Gauge Stainless Steel Plate Attached to Bottom Adds Touch of Style
- Easy to Install (Includes Corrosion-Resistant Mounting Hardware)
- Improves Vehicle Appearance & Extends Body Life by Reducing Rock and Stone Chips
- Universal Fit Applications Available Without Stainless Steel Attached at Bottom of Rubber

Traditional, Stainless Steel Splash Guards

- Neoprene Flap
- Heavy-Duty 18 ga. Stainless Steel Construction
- Not Affected by Exhaust Heat
- Easy to Maintain and Install
- Some Models Feature No Drill Installation
- Available for Front and Rear Applications in 10", 12", 14" and 20"
- Dual Wheel Applications for GM, Dodge, and Ford
- Improves Vehicle Appearance
- Extends Body Life by Reducing Rock and Stone Chips



Luverne Tonneau Cover

- Available for Short and Long Box Applications for Chevrolet/GMC, Ram, Ford F-150, and Ford Super Duty Pickups



SOFT ROLL-UP TONNEAU COVER

Corners are Sewn Together for a Finished Look on this Quality, American-Made Tonneau Cover (Lifetime Warranty - Applies to Original Owner)



EASY INSTALLATION AND USE

Includes Dual Locking Latches and Rear Tension Control



HEAVY-DUTY CONSTRUCTION

Heavy-Duty Aluminum Clamps



EASY, SECURE ROLL-UP

Tonneau Cover Locks Securely Into the J Channel on the Side Rails - No Need to Replace Aging Velcro Strips

When Cover is Rolled Up it is Secured into Place by Two 1" Wide Velcro Straps



*The Innovators and Leaders
in Professional Quality
Aluminum Utility Racks*

COMPLEMENTARY ACCESSORY
HAULER RACKS

The "Hauler" and Hauler II" truck rack series are available in a variety of configurations for full, mid, and mini-size pickup trucks. These racks are the choice for the professional needing heavy-duty, full-frame, overhead capacity, while maintaining clear access to the truck bed.

- Bright-Dipped Anodized Aluminum Construction is rustproof
- 6000 Series Aluminum - Strong and Lightweight
- Zinc-Plated and Stainless Steel Hardware - rustproof
- Manufactured to Strict Quality Standards
- Heavy-Duty Support Braces
- Weight Capacity 1,200 lbs.
- Mounts on Truck Bed Rail

*"Inside the Rail" Tonneau
Cover Kit is Available for the
Hauler and Hauler II Racks*



**Full Hauler Rack
Product Line Available
from Luverne Truck Equipment**

The "Universal" truck racks are available for several truck models.

- Bright-Dipped Anodized Aluminum Construction is rustproof
- 6000 Series Aluminum - Strong and Lightweight
- Zinc-Plated and Stainless Steel Hardware - rustproof
- Manufactured to Strict Quality Standards
- Aluminum Bed Mounting Pockets Allow for Secure and Easy Installation or Removal of Rack
- Weight Capacity 1,000 lbs.
- Pockets Mount to Lip and Bed of Truck

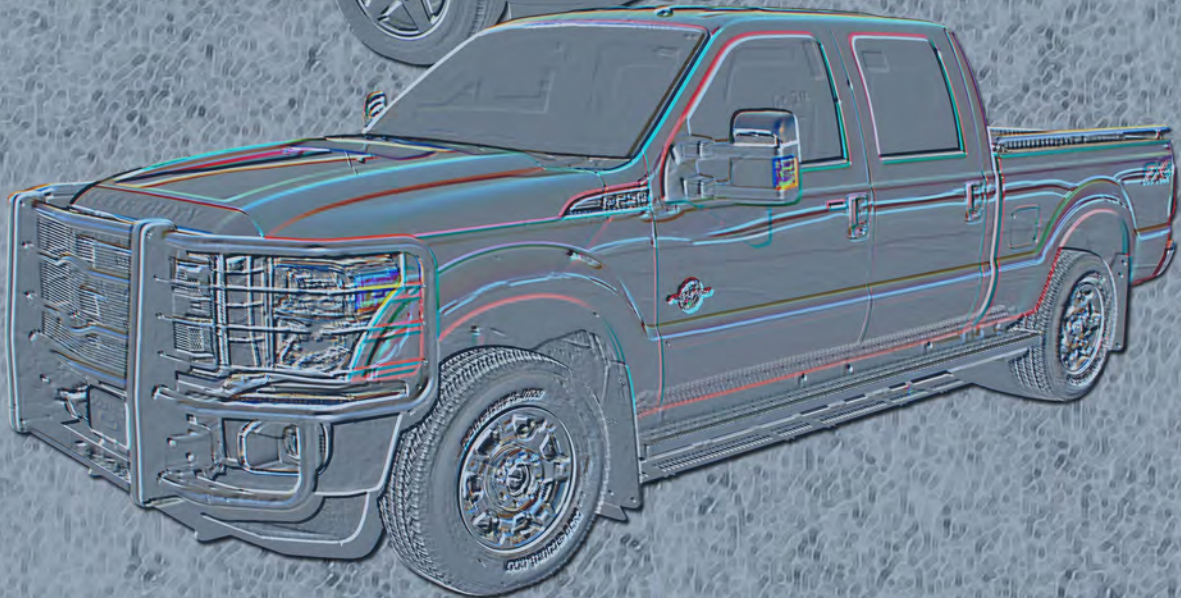


LUVERNE



LUEVERNE ACCESSORY
SLATWALL & GRID DISPLAY

QUALITY TRUCK & SUV ACCESSORIES



1200 East Birch Street / Brandon, SD 57005-2001

www.luvernetruck.com

800-533-0506

605-582-7200 / FAX 605-582-3486



Made in
America by
American
Workers

Rev. October 2014